



**ENTRUST**



## **Entrust Genuine Supplies**

### Artista® CE875 Instant Issuance System with Embossing Module

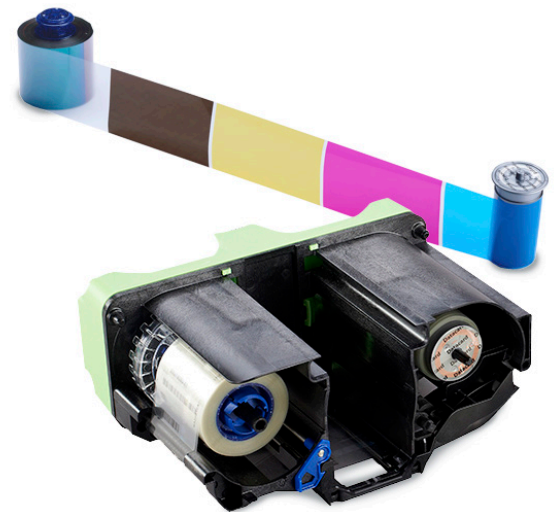
#### **Ensure peak performance**

The Artista CE875 Instant Issuance System with Embossing Module features proprietary print ribbons and retransfer material specifically designed for the CE875 card printer and featuring our RFID technology. When the printer recognizes that Entrust® genuine supplies are installed, all enhanced product features are enabled and successful card printing can begin.

We engineer superior performance and reliability into every system-matched supply item we offer.

- Smooth printing
- Brilliant image quality
- High security
- Exceptional performance

Worldwide representation creates a fast, direct connection with the supplies you need, when and where you need them. To ensure you are using Entrust Certified Supplies, look for ribbons that feature our distinctive blue cores with the platinum flecks.



**Learn more about our instant financial issuance supplies at [entrust.com](https://www.entrust.com)**



# Artista CE875 Instant Issuance System with Embossing Module

Artista CE875 card printer ribbon kits include all necessary cleaning supplies for the CE875 card printer's daily operations. Each color ribbon kit includes one ribbon, one isopropyl cleaning card, one cleaning lapping stick, one cleaning swab and one cleaning sleeve. Additional cleaning cards and cleaning sleeves can be ordered separately.

ITEM NUMBER	DESCRIPTION	FRONT APPLICATION	BACK APPLICATION	YIELD
<b>Ribbon and film options – for optimized card durability. Recommended to meet rigors of financial card applications.</b>				
513388-002	CMYKP-KPi Ribbon Combo Kit Includes: 1 color panel ribbon 513382-309 & 1 film ribbon 513402-101	CMYKP 2 film layers	KPi 1 film layer	500 duplex cards 500 duplex cards
513382-309 513402-101	CMYKP-KPi Color panel ribbon Clear retransfer film	CMYKP 2 film layers	KPi 1 film layer	500 duplex cards 500 duplex cards
513382-301 513402-102	CMYKP Color panel ribbon Clear retransfer film	CMYKP 2 film layers	None None	1,000 simplex cards 500 simplex cards
<b>Ribbon and film options – for baseline card durability</b>				
513382-309 513402-101	CMYKP-KPi Color panel ribbon Clear retransfer film	CMYKP 1 film layer	KPi 1 film layer	500 duplex cards 500 duplex cards
513382-301 513402-102	CMYKP Color panel ribbon Clear retransfer film	CMYKP 1 film layer	None None	1,000 simplex cards 1,000 simplex cards

ITEM NUMBER	DESCRIPTION	YIELD*
<b>Topping Foils</b>		
504139-013	Silver	500 cards
504139-002	Black	500 cards
504139-003	Gold	500 cards
504139-001	Dark blue	500 cards
504139-028	White	500 cards
504139-033	Copper	500 cards
504139-021	Metallic Gray	500 cards
<b>Indent Ribbons</b>		
504461-001	Black	900 cards <sup>1</sup>
504461-002	White	900 cards <sup>1</sup>



# Artista CE875 Instant Issuance System with Embossing Module

ITEM NUMBER	DESCRIPTION	YIELD*
<b>Cleaning Supplies</b>		
524554-001	Retransfer cleaning kit: includes cleaning sleeves, isopropanol cards, adhesive cards, lapping sticks, & gloves	N/A
569946-002	Cleaning sleeve kit (5-pack) - Adhesive-coated sleeves/roller for continuous card cleaning	N/A
507377-001	Cleaning swabs (5-pack) - Isopropyl-saturated swabs for cleaning dust and debris from printheads and hard-to-reach internal printer areas	N/A
812526-001	Dry cleaning swab	N/A
812335-001	Card inspection gloves (12-pack)	N/A
530030-001	Cleaning lapping stick	N/A
<b>Accessories</b>		
503844-001	Indent cartridge	N/A
503707-001	Topping cartridge	N/A

Ensuring the right fit when it comes to card life expectations is critical for financial card issuance programs. The Artista CE875 has a simple solution for increasing card durability that stands up to life's demands. Adding a second layer of retransfer film during printing application is easy with a simple setting change to the card profile manager.

**C = Cyan, M = Magenta, Y = Yellow, K = Black, P = Primer, I = Inhibitor**

For use with PVC cards and PVC composite cards. Use with polycarbonate or other card types may not be suitable and requires specific card compatibility testing.

Learn more at  
**entrust.com**



Global Headquarters  
1187 Park Place, Minneapolis, MN 55379  
U.S. Toll-Free Phone: 888 690 2424  
International Phone: +1 952 933 1223  
[info@entrust.com](mailto:info@entrust.com) [entrust.com/contact](https://entrust.com/contact)

Entrust, Artista, and the hexagon logo are trademarks, registered trademarks, and/or service marks of Entrust Corporation in the U.S. and/or other countries. All other brand or product names are the property of their respective owners. Because we are continuously improving our products and services, Entrust Corporation reserves the right to change specifications without prior notice. Entrust is an equal opportunity employer.  
©2022 Entrust Corporation. All rights reserved. SG23Q1-ifi-ce875-supplies-ds